



**1. STATURE**

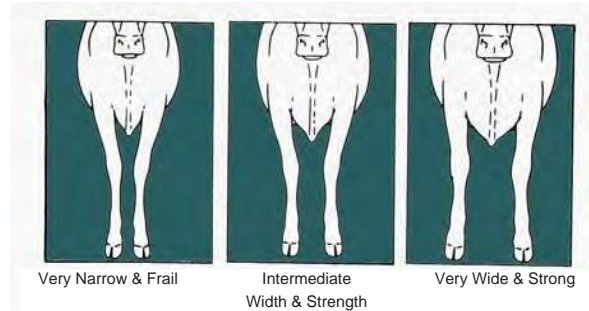
Measures height at the hips. For each 1" change from 55" (= 5 points) the point assignment shall change by 1.

1-Very Short 51" 3-Short 53" 5-Intermediate Height 55" 7-Tall 57" 9-Very Tall 59"

**2. STRENGTH (Chest & Body)**

Measures chest depth and width, heart girth, and bone mass in relation to the rest of the cow.

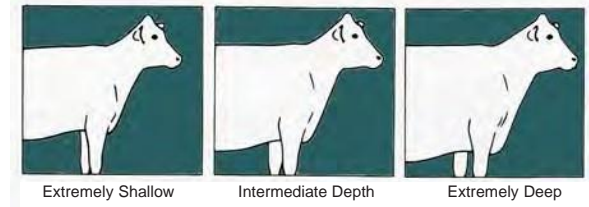
- 1 - Very narrow & frail
- 3 - Narrow & frail
- 5 - Intermediate width & strength
- 7 - Wide & strong
- 9 - Very wide & strong



**3. BODY DEPTH**

Measures overall depth primarily at the ribcage in relation to the rest of the cow.

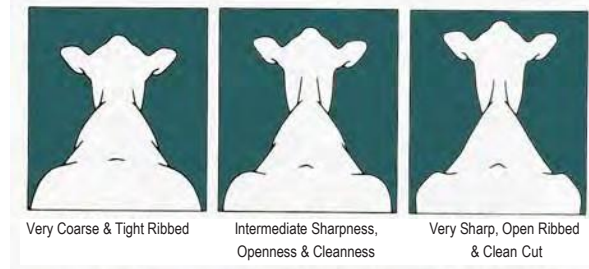
- 1 - Extremely shallow
- 3 - Shallow
- 5 - Intermediate depth
- 7 - Deep
- 9 - Extremely deep



**4. DAIRY FORM**

Structure includes evidence of milking ability, including cleanness, sharpness, openness of rib, flatness of bone, and length of neck.

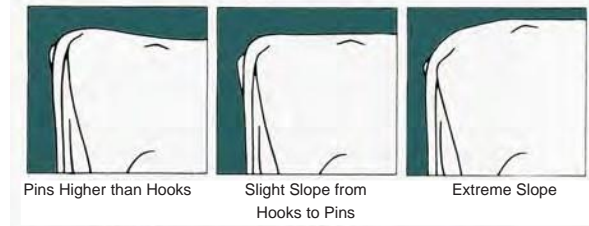
- 1 - Very coarse & tight ribbed
- 3 - coarse & tight ribbed
- 5 - Intermediate sharpness, openness, & cleanness
- 7 - Sharp, open ribbed, & clean cut
- 9 - Very sharp, open ribbed, & clean cut



**5. RUMP ANGLE (Side View)**

Measures the degree of slope from hooks to pins.

- 1 - Pins higher than hooks - 3" reverse slope
- 3 - Pins higher than hooks - 1"
- 4 - Level Rump
- 6 - Ideal slope from hooks to pins - 2" slope
- 9 - Extreme slope - 5" slope



**6. THURL WIDTH**

Measures the width at the pelvic region with emphasis on width of thurls in relation to the rest of the cow.

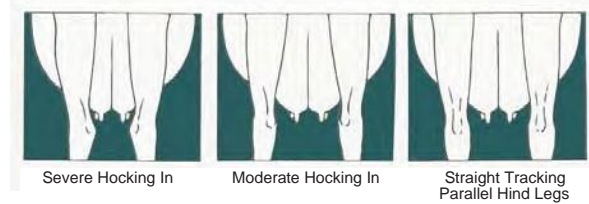
- 1 - Extremely narrow at thurls
- 3 - Slightly narrow at thurls
- 5 - Intermediate width at thurls
- 7 - Moderately wide at thurls
- 9 - Extremely wide at thurls



**7. REAR LEGS (Rear View)**

Scored as the animal walks or stands.

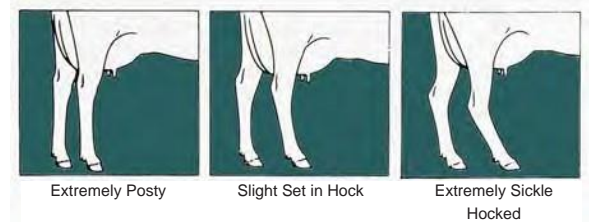
- 1 - Severe hocking in
- 4 - Considerable hocking in
- 6 - Moderate hocking in
- 8 - Straight tracking, parallel hind legs
- 9 - Slight hocking out



**8. REAR LEGS (Side View)**

Scores the amount of set of the leg.

- 1 - Extremely posty
- 3 - Nearly straight in hock
- 5 - Slight set in hock
- 7 - Moderate set in hock
- 9 - Extremely sickle hocked

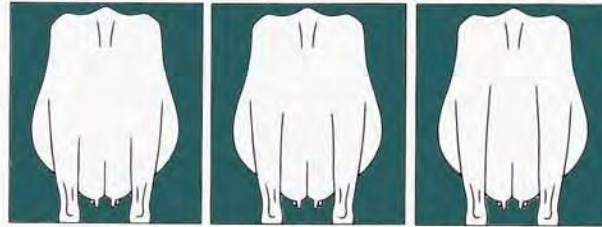




Extremely Low Angle & Extremely Shallow Heel      Intermediate Angle & Average Depth of Heel      Extremely Steep Angle & Extremely Deep Heel



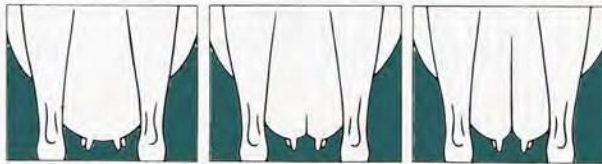
Extremely Loose, Weak or Broken Attachment      Strong Attachment      Extremely Tight & Strongly Attached



Extremely Low      Intermediate Height      Extremely High



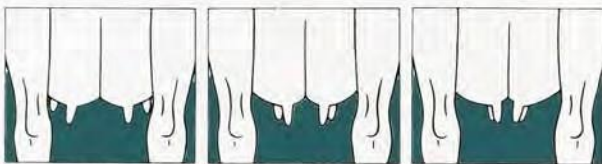
Extremely Narrow      Intermediate Width      Extremely Wide



Negative Cleft, Broken Support      Defined Halving and Cleft      Extremely Deep Cleft



Extremely Deep - Below Hock      Slightly Above Hock      Extremely High - Shallow



Base of Front Teats Extremely Wide      Placement Slightly Towards Outside      Base of Teats Extremely Close



Extremely Short      Intermediate Length      Extremely Long

## 9. FOOT ANGLE

Measured on the first inch down from the hair line ( $3^\circ = 1$  point).

- 1 - Extremely low angle -  $33^\circ$
- 3 - Moderately low angle -  $39^\circ$
- 5 - Intermediate angle -  $45^\circ$
- 7 - Moderately steep angle -  $51^\circ$
- 9 - Extremely steep angle -  $57^\circ$

## 10. FORE UDDER ATTACHMENT

Measures strength of the attachment of fore udder to body wall.

- 1 - Extremely loose, weak, or broken
- 3 - Very loose, weak
- 5 - Strong attachment
- 7 - Very strongly attached
- 9 - Extremely tight & strongly attached

## 11. REAR UDDER HEIGHT

Measured at the top of secretory tissue in relation to the midpoint of the pins and the point of the hock.

- 1 - Extremely low
- 3 - Low
- 5 - Intermediate height (2" above the midpoint)
- 7 - High
- 9 - Extremely high

## 12. REAR UDDER WIDTH

Measured at the top of the crease between the leg and udder.

- 1 - Extremely narrow -  $4\frac{1}{2}$ "
- 3 - Narrow - 6"
- 5 - Intermediate width -  $7\frac{1}{2}$ "
- 7 - Wide - 9"
- 9 - Extremely wide -  $10\frac{1}{2}$ "

## 13. UDDER CLEFT

Measures the depth of cleft of the udder ( $\frac{1}{3}$ " per point).

- 1 - Negative cleft, broken support
- 2 - Flat
- 3 - Slight cleft -  $\frac{1}{3}$ "
- 5 - Defined halving & cleft - 1"
- 7 - Deep cleft -  $1\frac{2}{3}$ "
- 9 - Extremely deep cleft -  $2\frac{1}{3}$ "

## 14. UDDER DEPTH

Measured from the point of hock as viewed from the rear in relation to the floor of the udder (1" per point).

- 1 - Extremely deep - below hock - 2" below
- 3 - Level with the hock
- 5 - Slightly above hock - 2" above
- 7 - Floor well above hock - 4" above
- 9 - Extremely high - shallow - 6" above

## 15. TEAT PLACEMENT (Rear View)

Measures placement of front teats on the quarter.

- 1 - Base of front teats extremely wide
- 3 - Placement moderately toward outside (wide)
- 5 - Placement slightly toward outside
- 6 - Centrally placed
- 7 - Placement slight toward inside (close)
- 9 - Base of teats extremely close

## 16. TEAT LENGTH

From average of  $2\frac{1}{4}$ ", a  $\frac{3}{4}$ " change adjusts score 2 points.

- 1 - Extremely short -  $\frac{3}{4}$ "
- 3 - Moderately short -  $1\frac{1}{2}$ "
- 5 - Intermediate length -  $2\frac{1}{4}$ "
- 7 - Moderately long - 3"
- 9 - Extremely long -  $3\frac{3}{4}$ "

